



DST

USB Driver Installation Microsoft Vista, Windows 7, Windows 8

Insert the JET Dynamic Spectrum Tuner CD into your CD ROM drive. The setup program should auto run and the main setup screen will appear.



You may get the following screen instead.

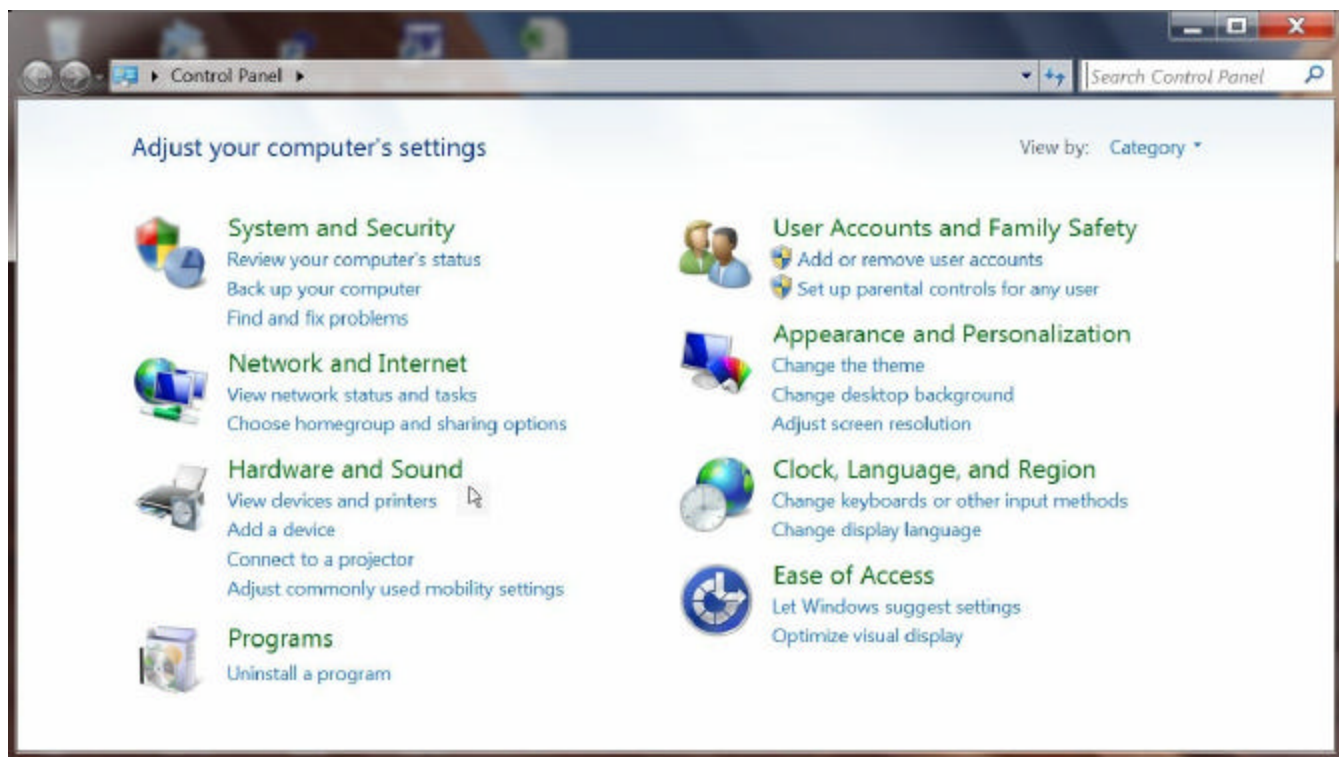


If so click on the Run autorun.exe option and the Dynamic Spectrum Tuner setup screen will appear.

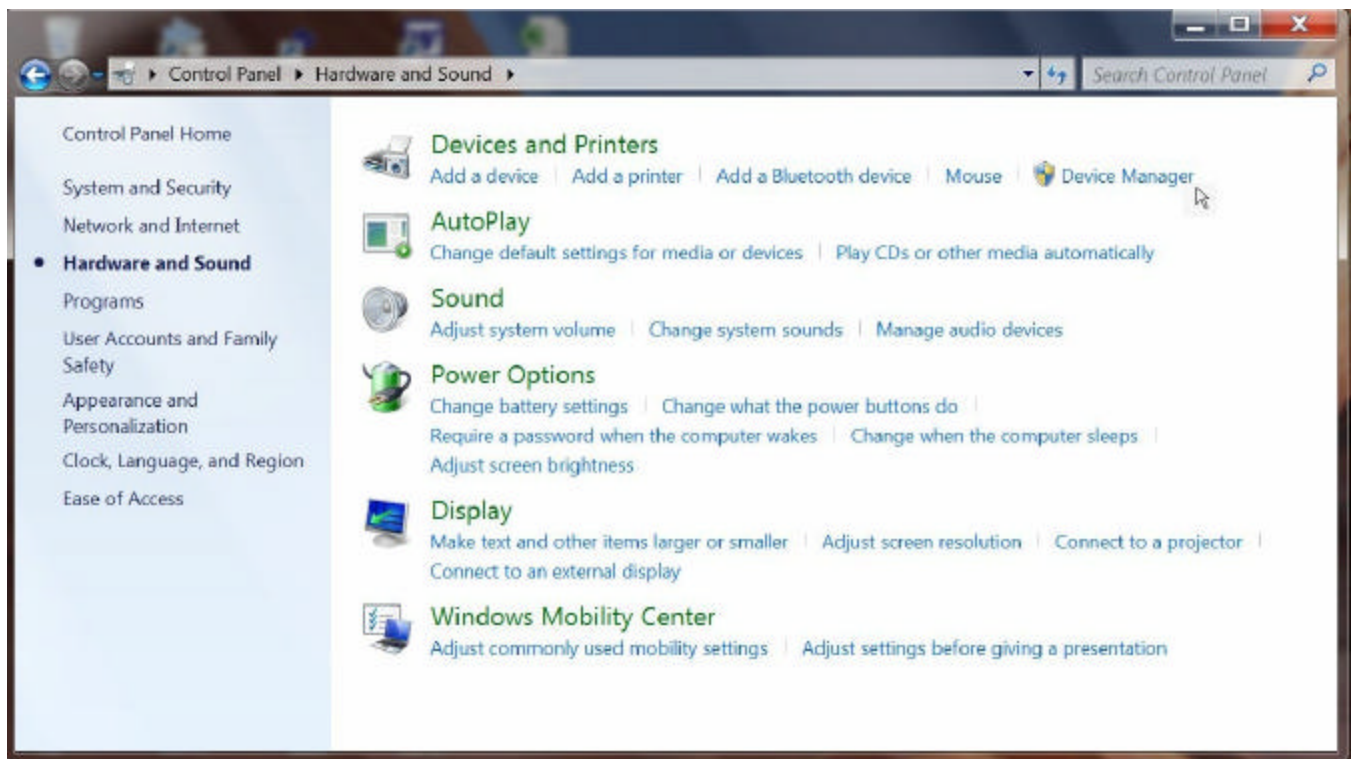
Click on the 'Exit' button on the main setup screen to exit the setup program.

Connect your Dynamic Spectrum Tuner interface unit to an available USB port on your PC.

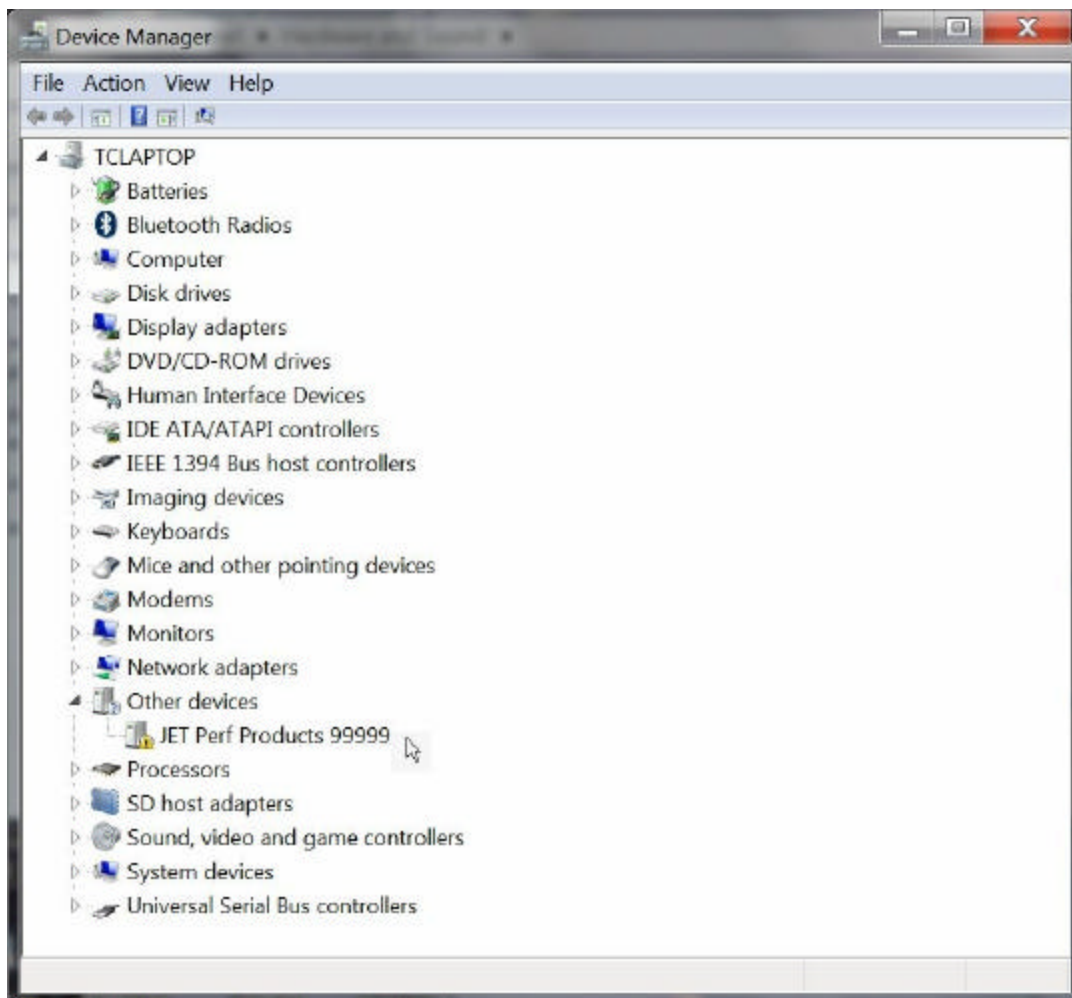
Click on the Windows button on your Desktop and select 'Control Panel' from the list on the right. This will open the Windows Control Panel.



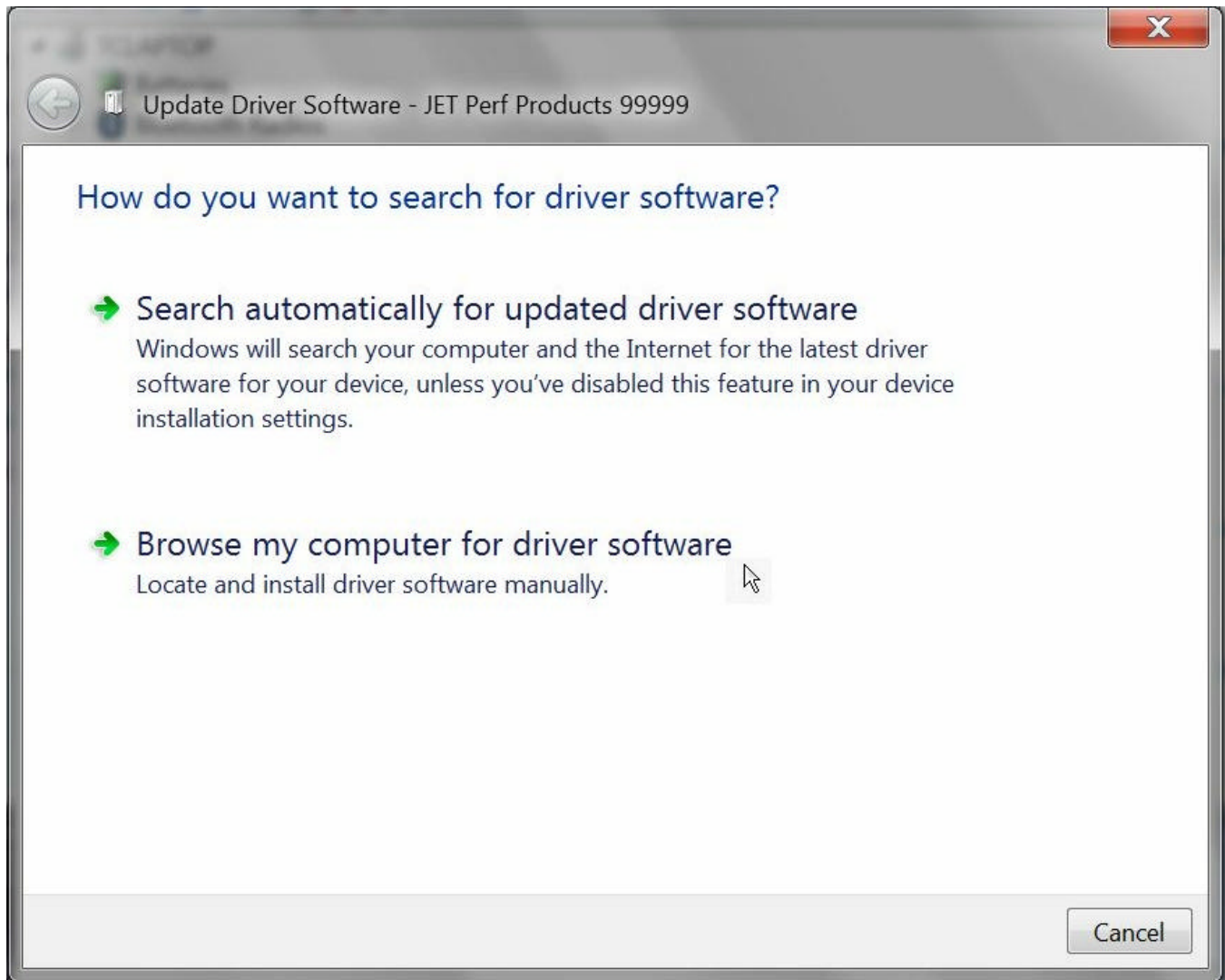
Click on the 'Hardware and Sound' option.



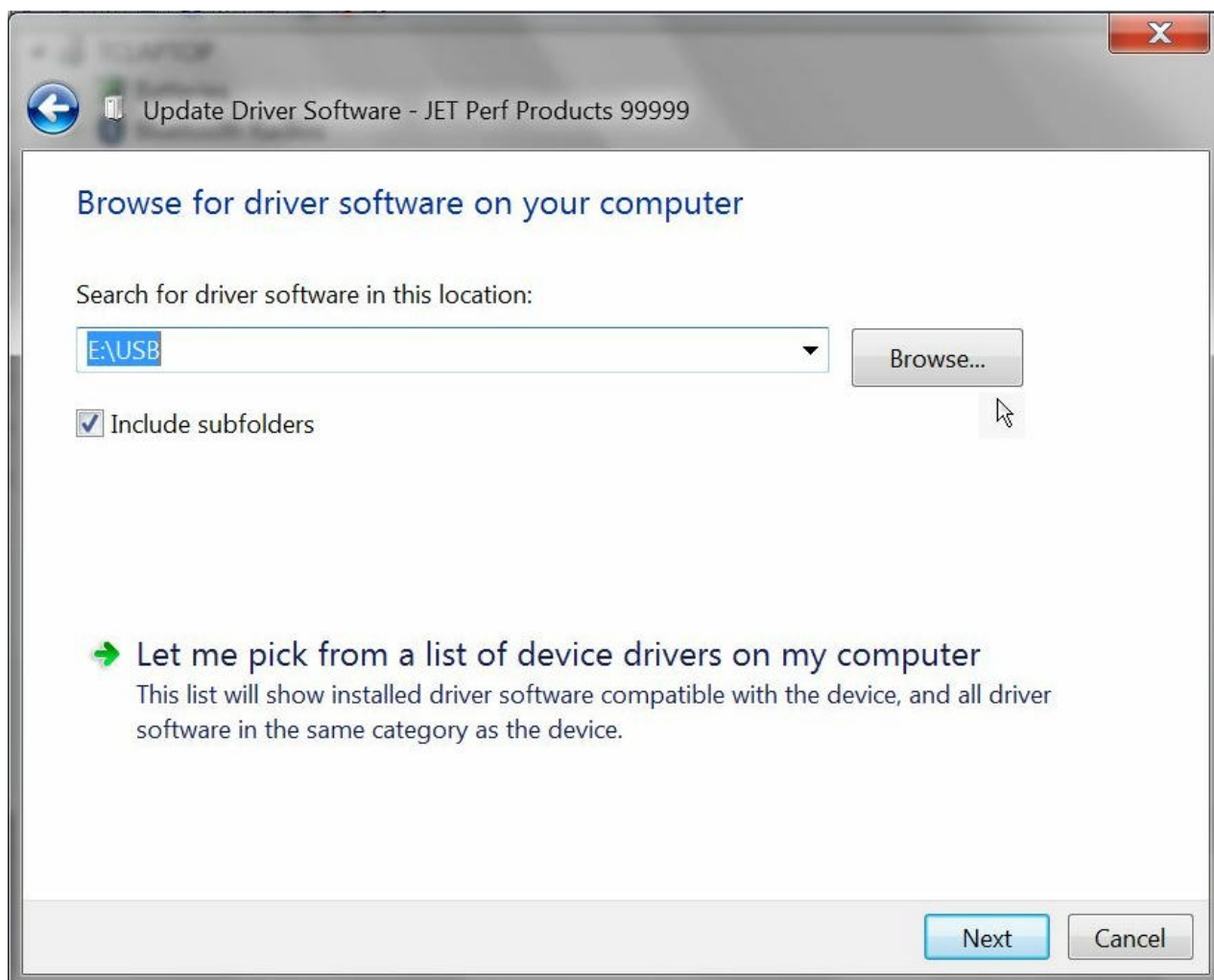
Then select the 'Device Manager' option from 'Devices and Printers'. This will display the Device Manager screen.



Under 'Other Devices' (expand this category if necessary) you will see an item named 'JET Performance Products 99999' annotated with a yellow exclamation point. Right click on this item and select 'Update Driver Software' from the pop-up menu. This will display the Driver Update screen.



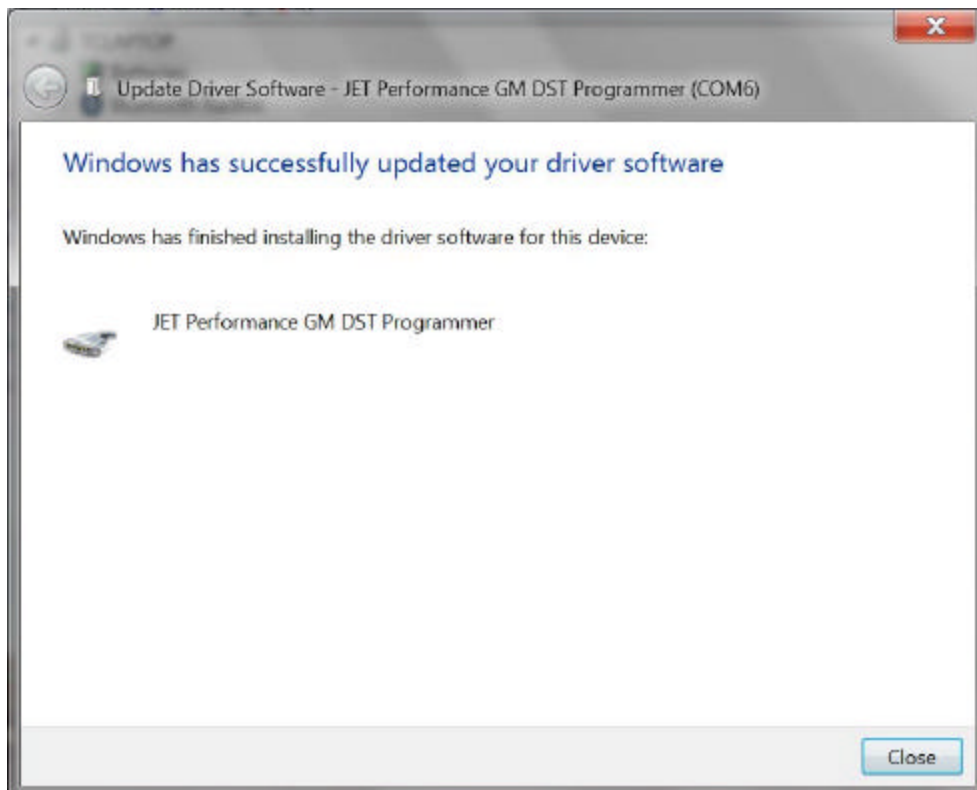
Click on the 'Browse my computer for driver software' option.



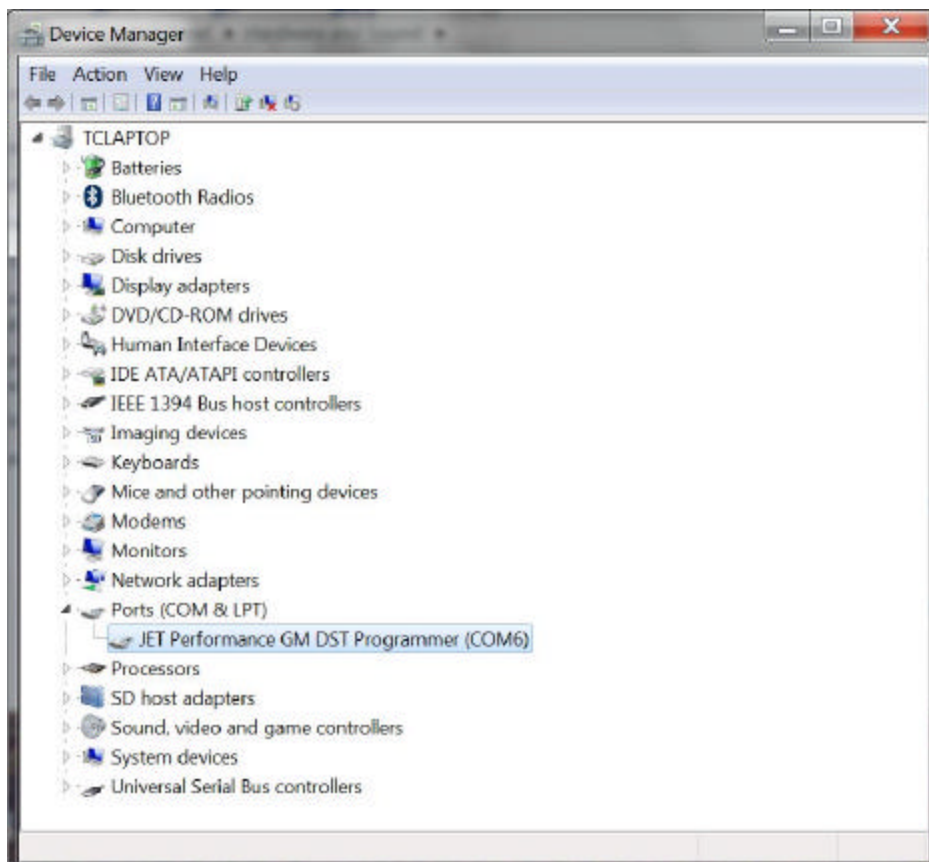
Click on the 'Browse' button and then navigate to the USB folder on the Dynamic Spectrum Tuner CD. Then click on the 'Next' button. This will begin the driver installation process. If you get the following Windows Security screen then click on the 'Install this driver software anyway' option to continue the installation process.



Once the driver installation process completes the following screen will appear.

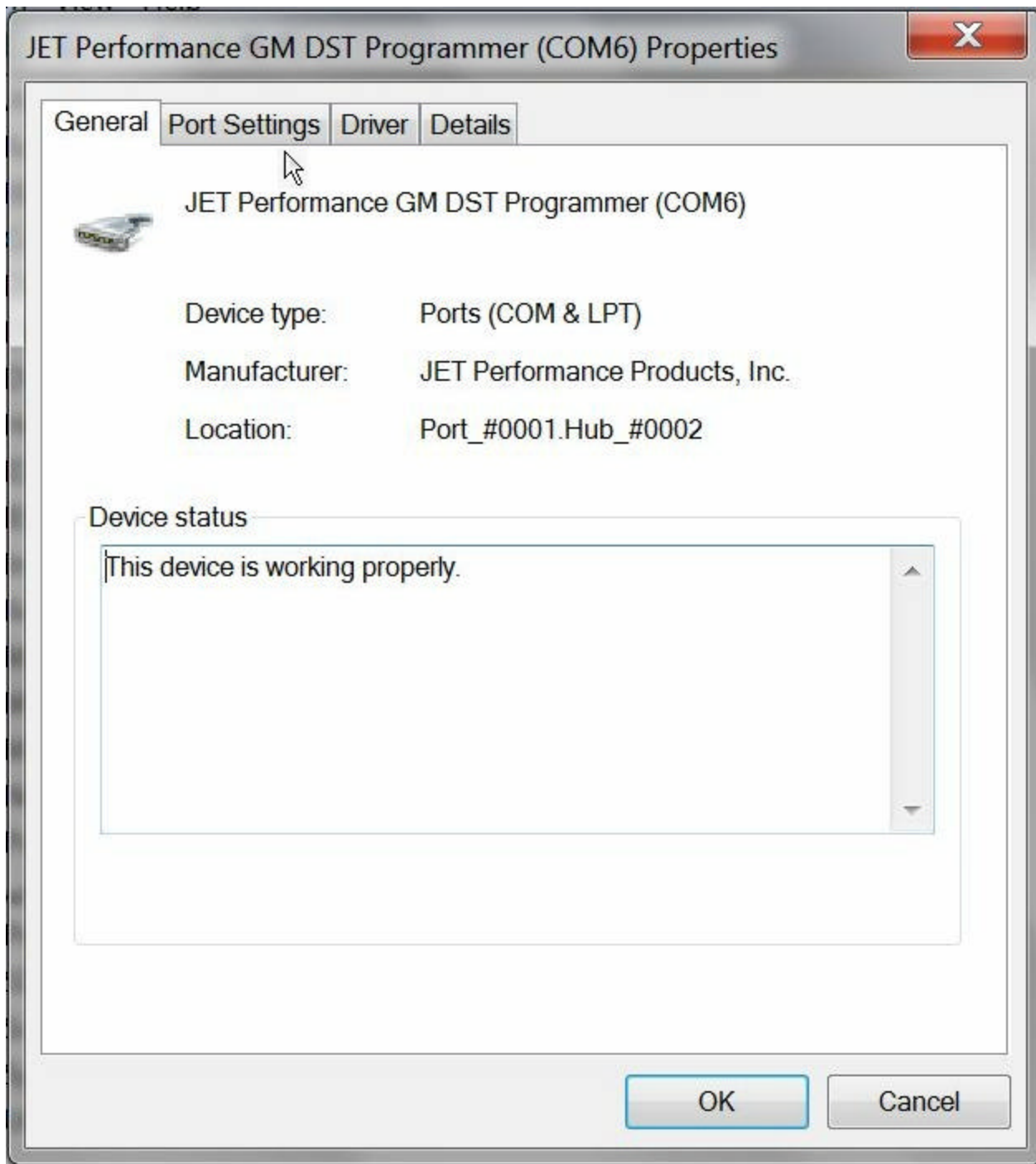


Click on the 'Close' button to close this screen. The Device Manager screen should now show the item 'JET Performance GM DST Programmer (COMx)' under 'Ports (COM & LPT)'.



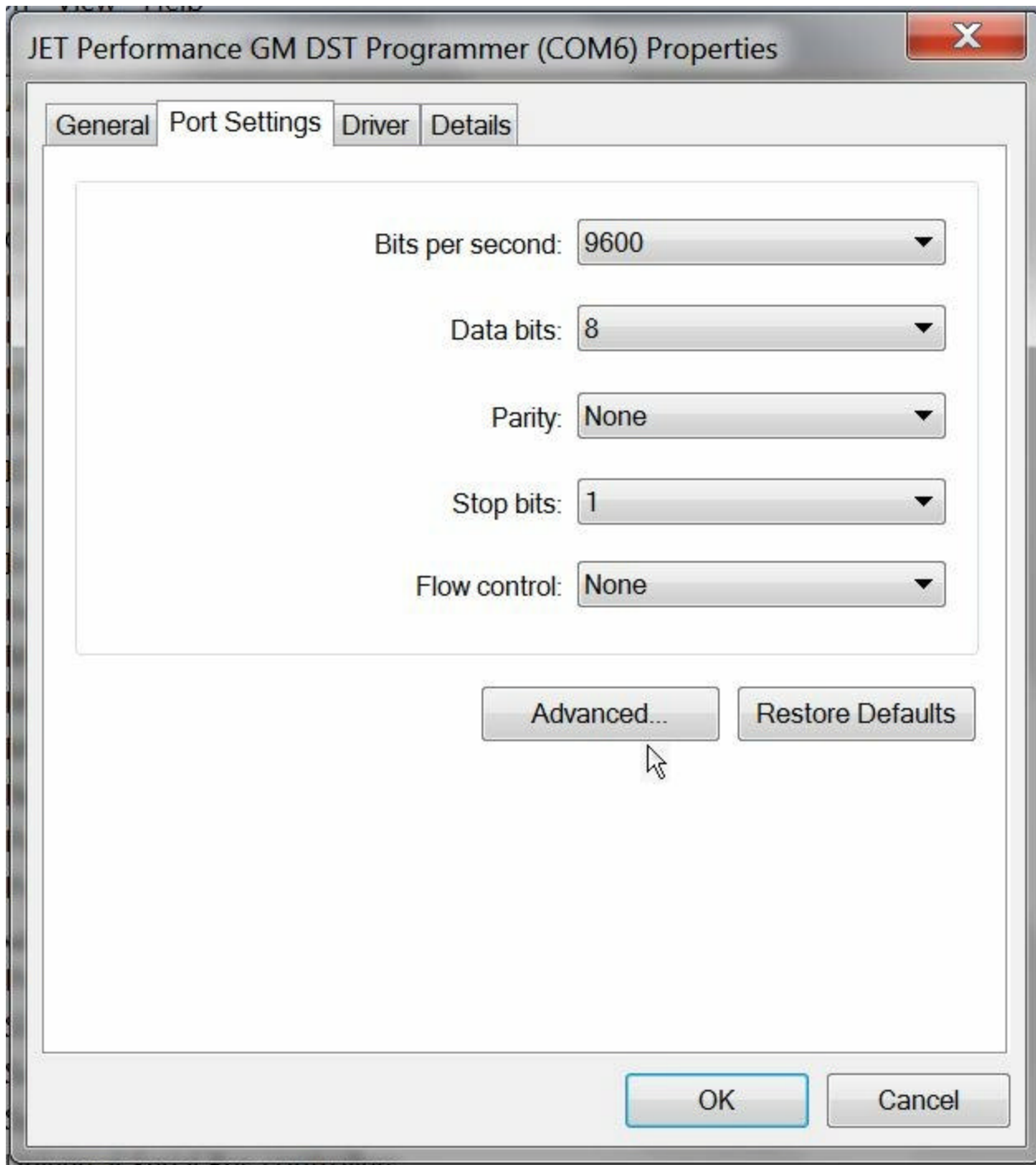
Note the COM number that is shown in parentheses after the JET Performance GM DST Programmer item. If this number is 16 or less this completes the USB driver installation. If a number larger than 16 is shown here then continue as follows:

Right click on the JET Performance GM DST Programmer item and select 'Properties' from the pop-up menu.

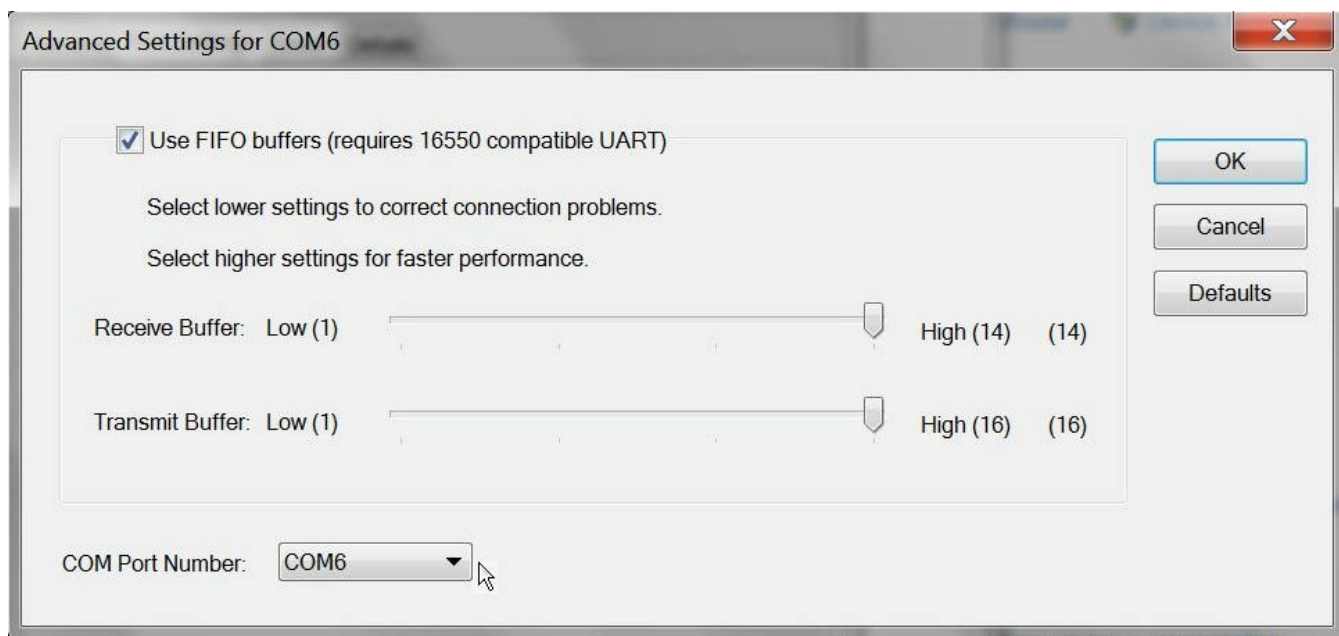


On the Properties screen click on the 'Port Settings' tab.

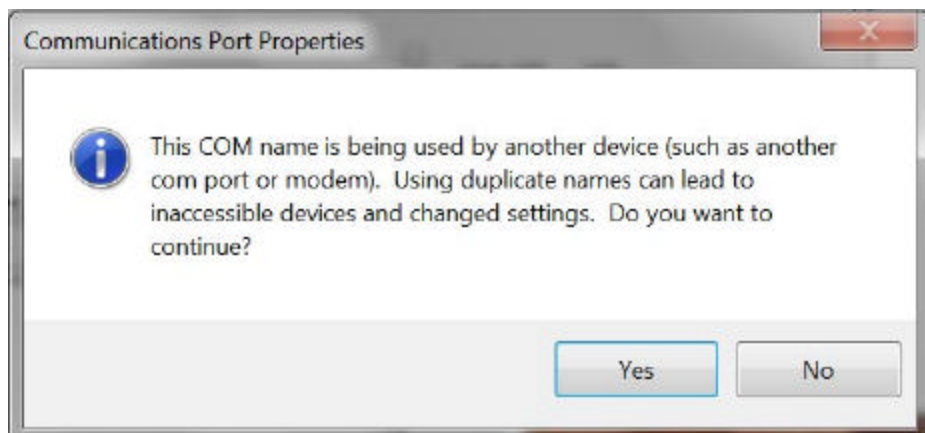
Next click on the 'Advanced' button.



Click on the down arrow to the right of the COM Port Number to expand the list of com port numbers.



Select a com port number of 16 or less. Note: the com port you select should not be one that is being used by another device currently connected to your PC. Then click on the 'OK' button. You may get the following warning if you selected a com port number that has been reserved by Windows.



If so click on the 'Yes' button. Close the Device Manager screen to complete the driver installation.

JET Performance Products, Inc
17491 Apex Circle
Huntington Beach, California 92647

714-848-5515

www.jetchip.com

714-847-6290 fax