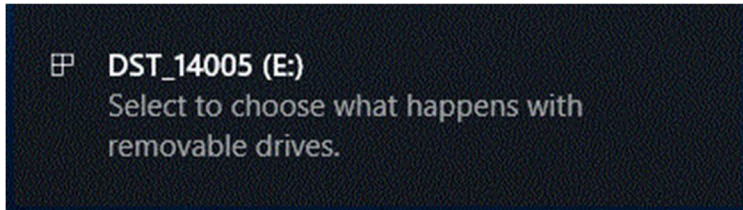


# JET Performance Products Dynamic Spectrum Tuner

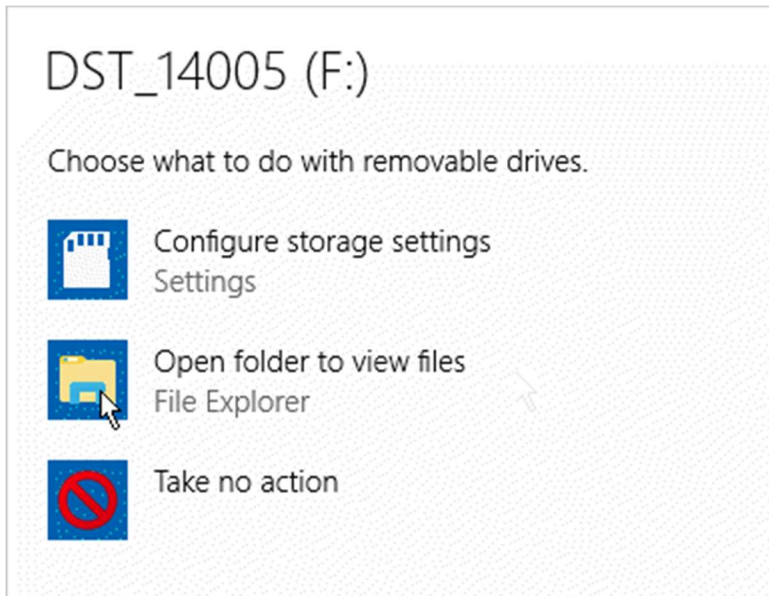
## Windows 10 Installation Instructions

If you are running Microsoft Windows 10, please install the Dynamic Spectrum Tuner on your PC as follows:

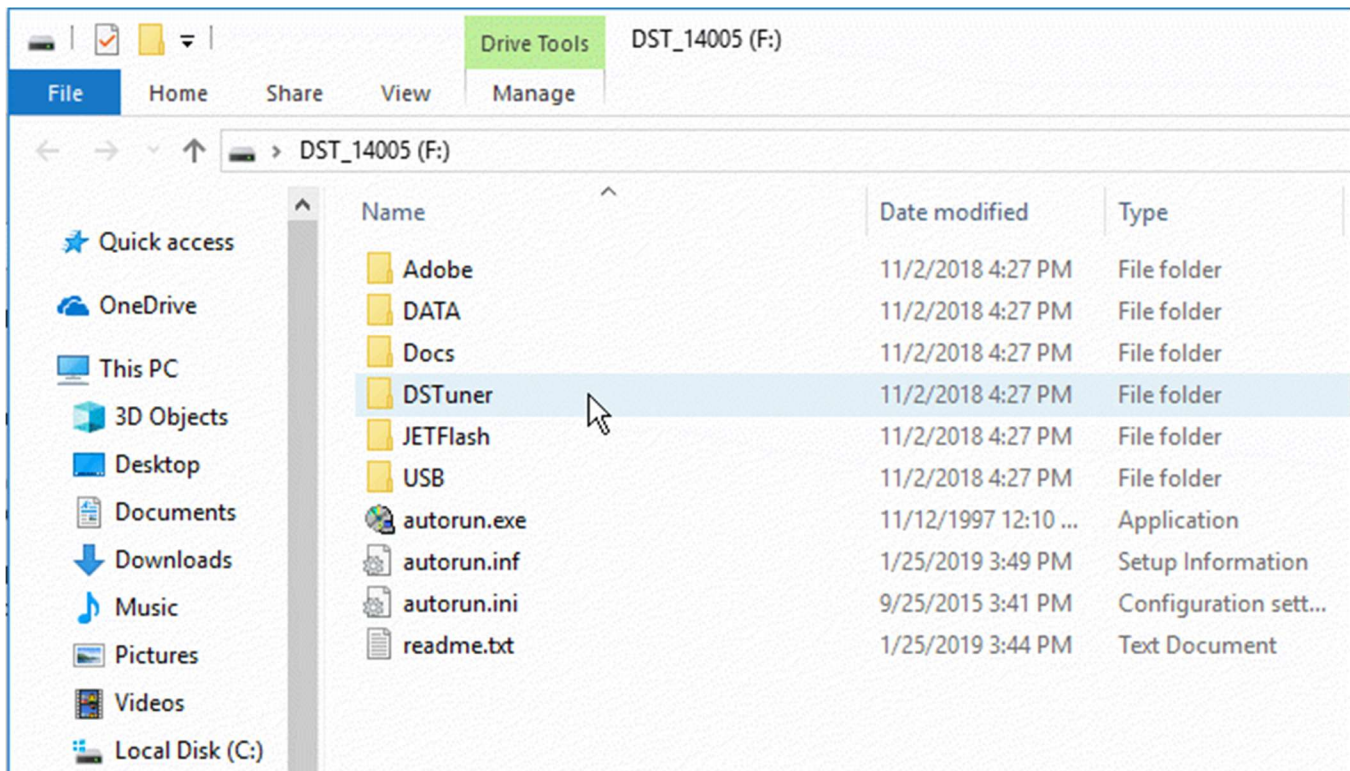
1. Insert the Dynamic Spectrum Tuner thumb drive into a USB port on your PC. Once the PC recognizes the thumb drive you will receive a 'Select to choose what happens with removable drives' message.



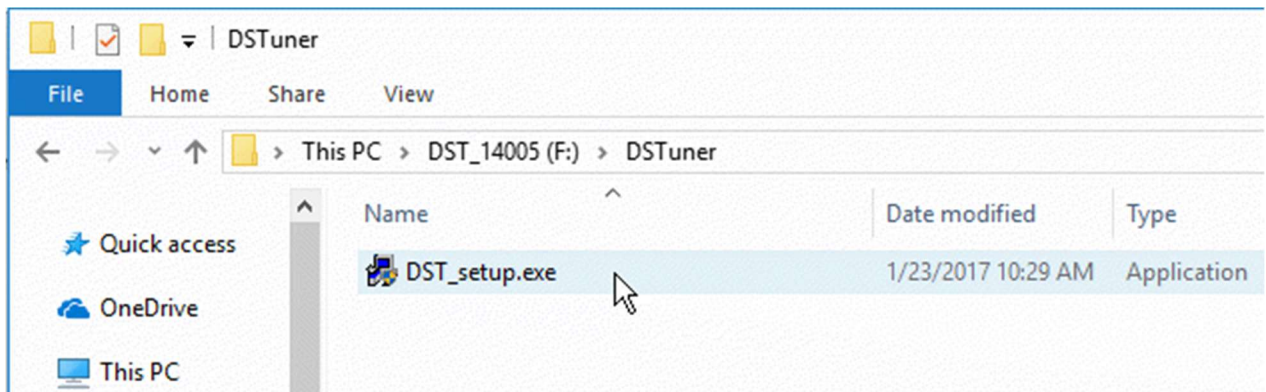
2. Click on this message to open the drive options screen. Under 'Choose what to do with removable drives' click on the 'Open folder to view files' option. This will open the Windows File Explorer with the Dynamic Spectrum Tuner thumb drive.



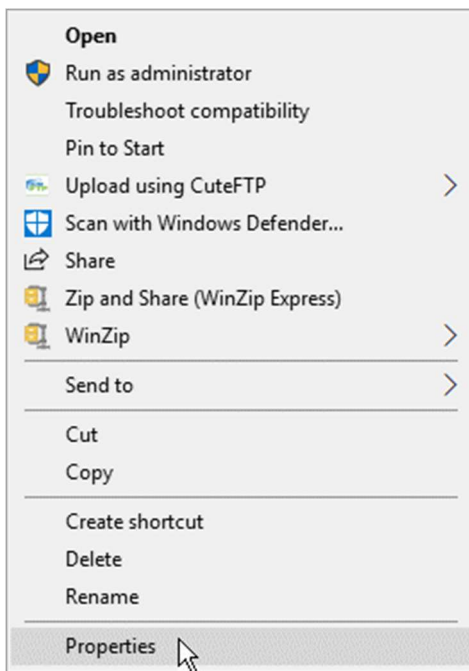
3. Double click on the folder named *DSTuner* to open this folder.



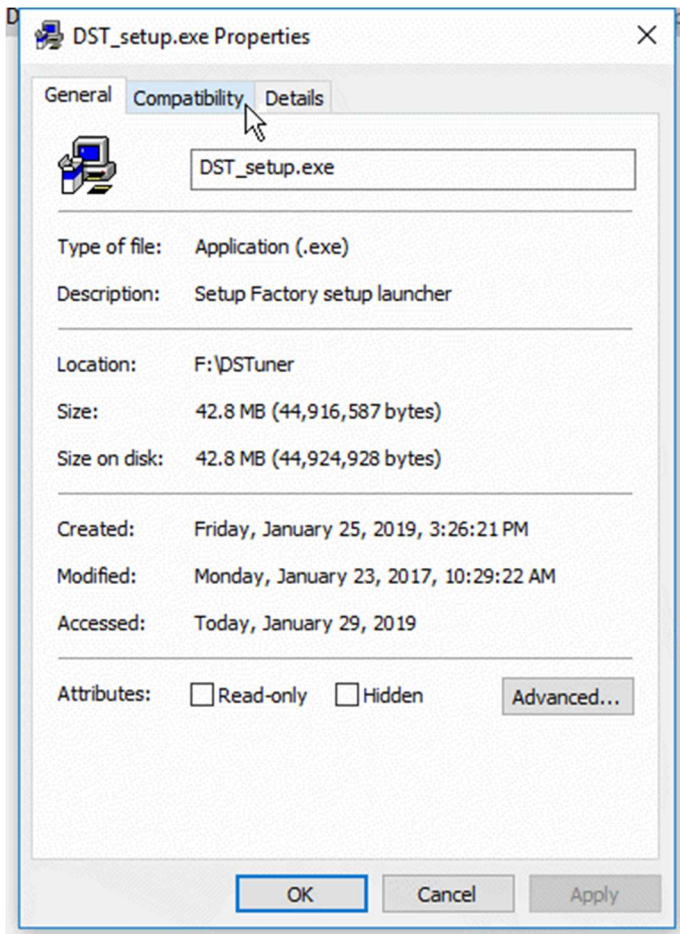
4. This folder contains the installation program for the Dynamic Spectrum Tuner (*DST\_setup.exe*). Right click on this file and a pop-up menu will appear.



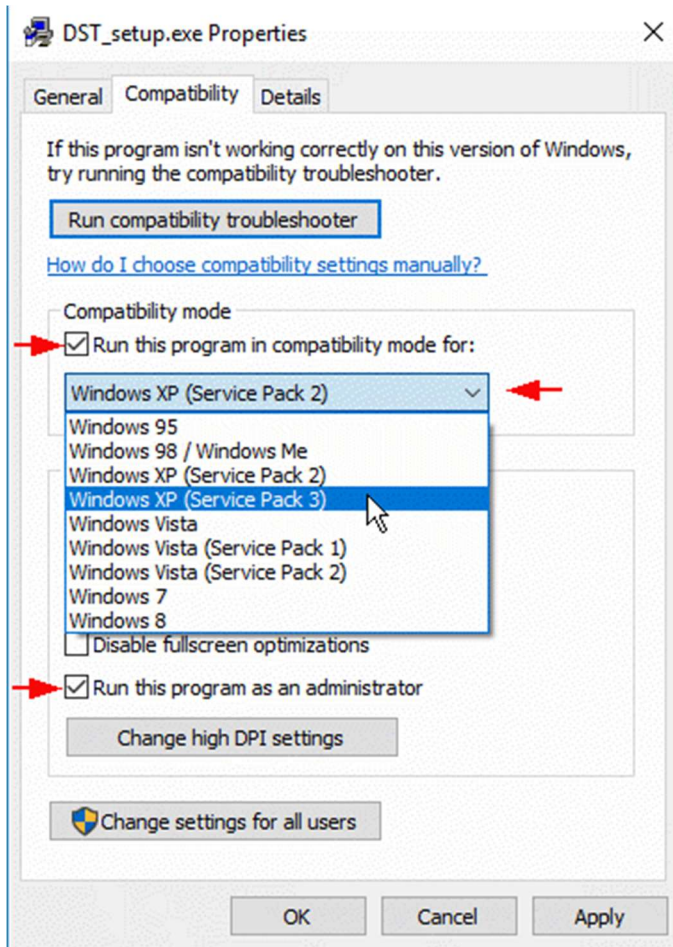
5. Click on 'Properties' in the pop-up menu and the file properties screen will appear.



6. On the Properties screen click on the Compatibility tab if it is not already selected.

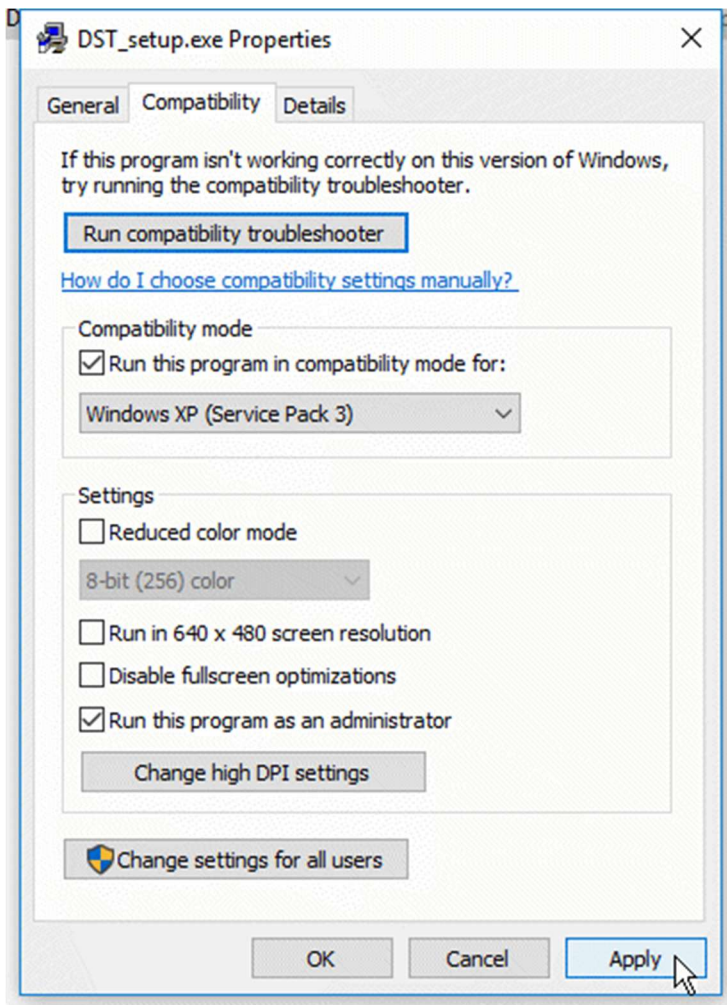


7. Check the 'Run this program in compatibility mode for:' check box. Click on the down arrow to the right of the compatibility mode box and select 'Windows XP (Service Pack 3)' from the list. Then check the 'Run this program as an administrator' check box.

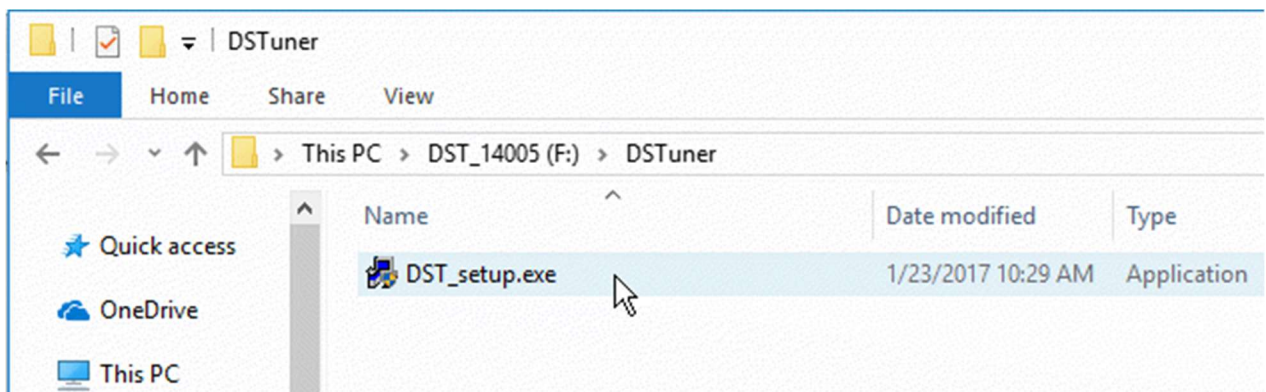


8. Finally click on the 'Apply' button and then on the 'OK' button to close the Properties screen.

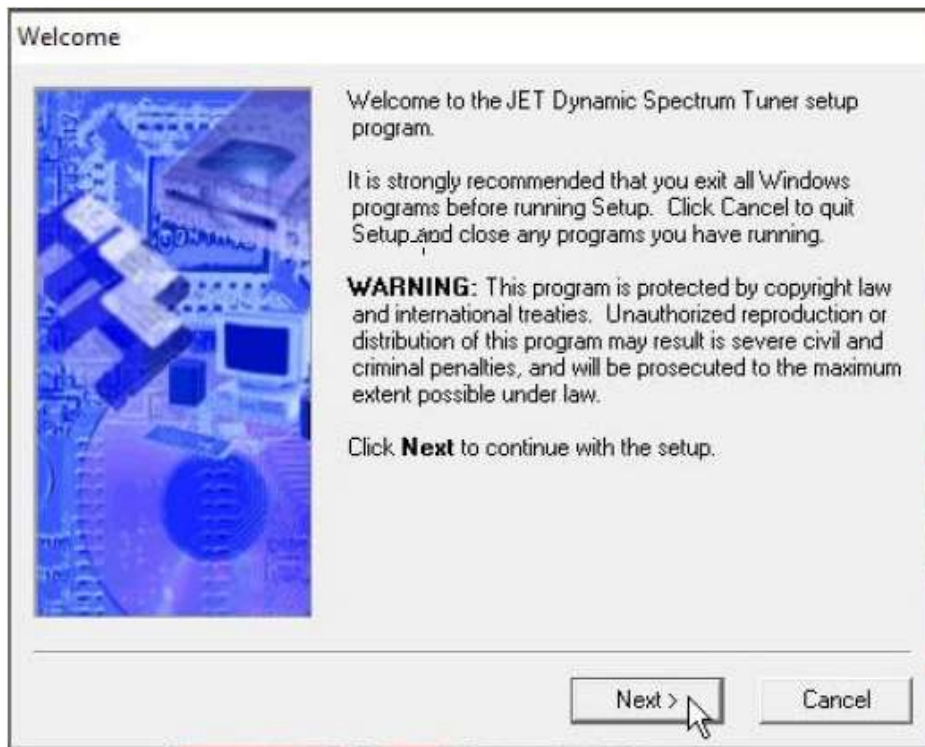




9. Now double click on the Dynamic Spectrum Tuner installation program in the File Explorer window (DST\_setup.exe) to start the installation program. The first screen of the installation process will be displayed.



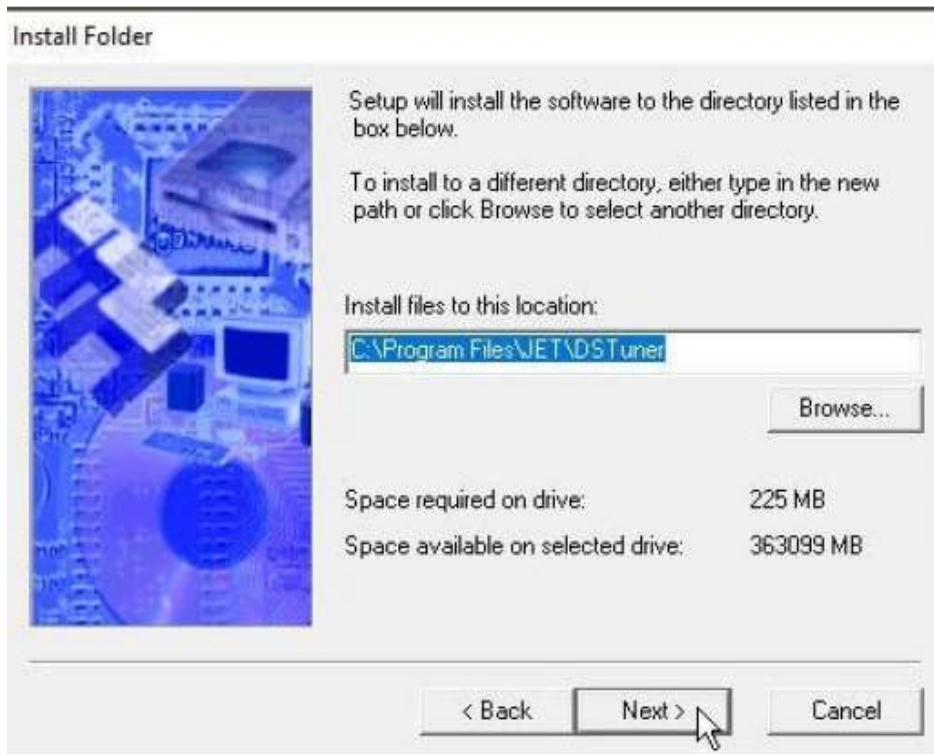
10. Click on the Next button to proceed.



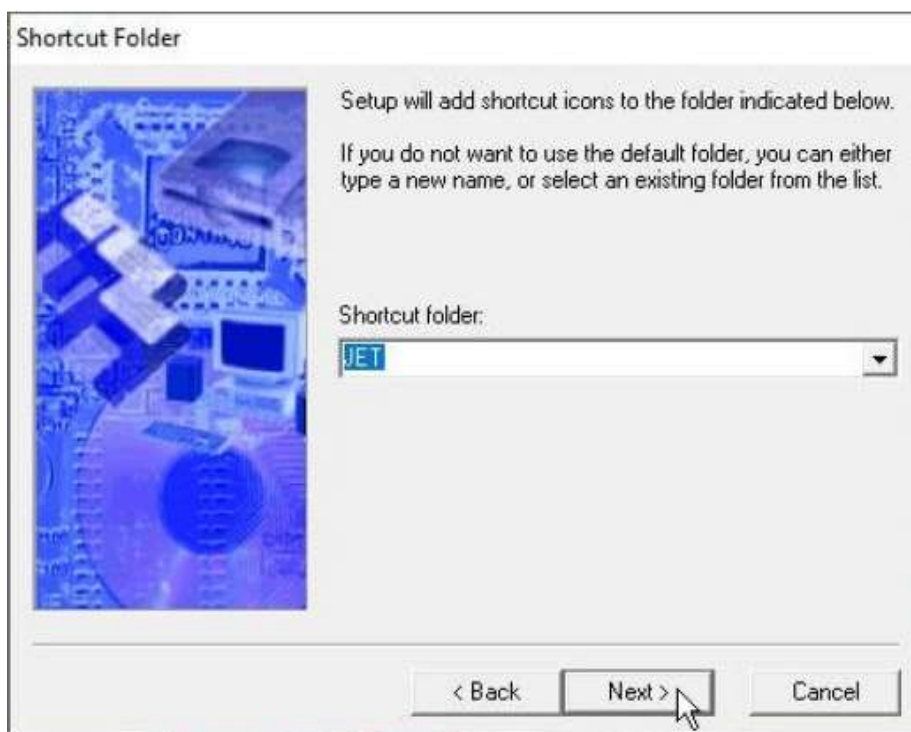
11. Please read the software license agreement and click on the Accept button to continue with the program installation.



12. The next screen shows the folder into which the Dynamic Spectrum Tuner will be installed and allows you to change this folder if desired. By default, the program will be installed into the folder c:\Program Files\JET\DS Tuner. Click on the Next button to continue.

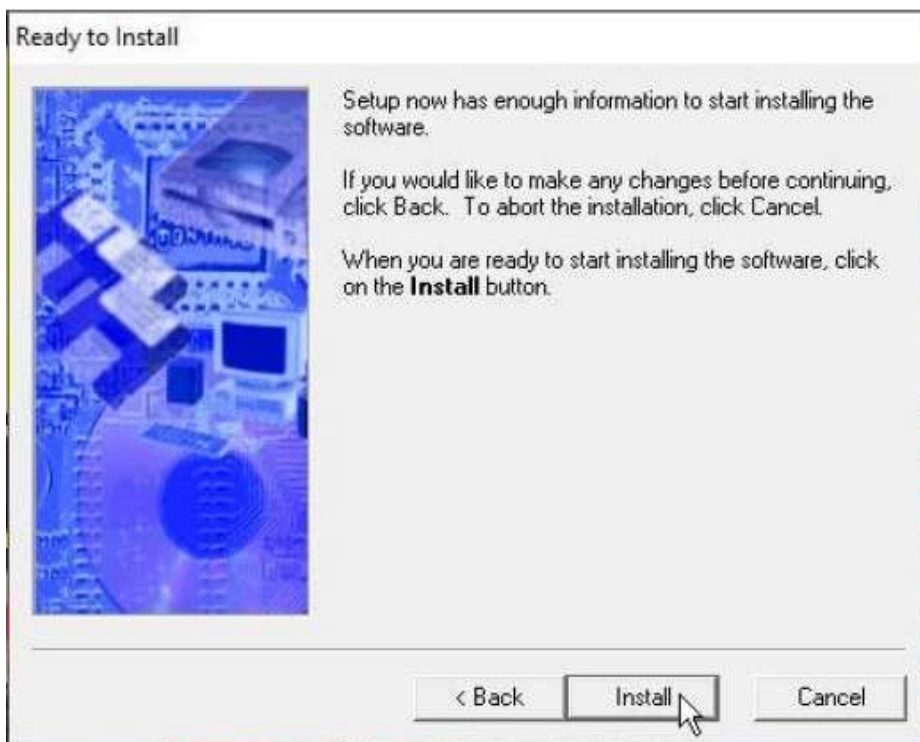


13. This screen shows the name of the shortcut folder that will appear in your Windows applications list and allows you to change it if desired. By default, the shortcut folder name is JET.

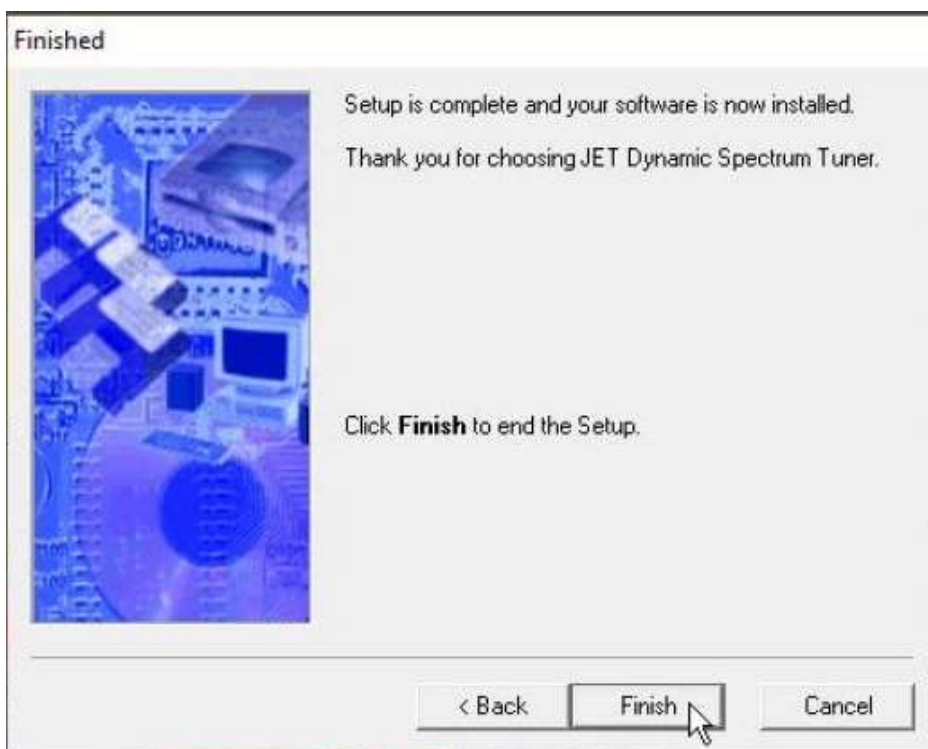




14. The setup program is now ready to install the Dynamic Spectrum Tuner. Click on the Install button to proceed with the installation.

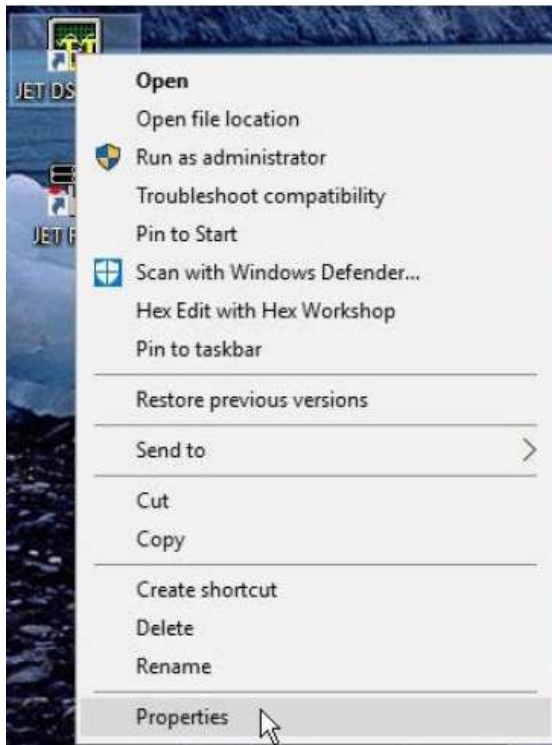


15. When the installation is complete the Finished screen will be displayed. Click on the Finish button to complete the installation and close this screen. (The installation program may request that you restart your PC to complete the installation.)

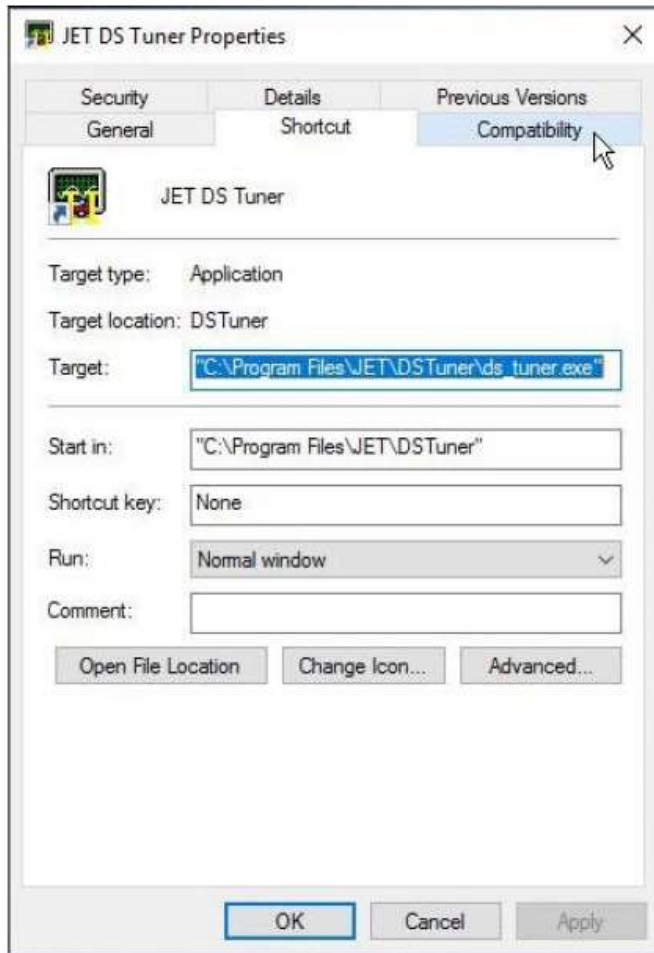




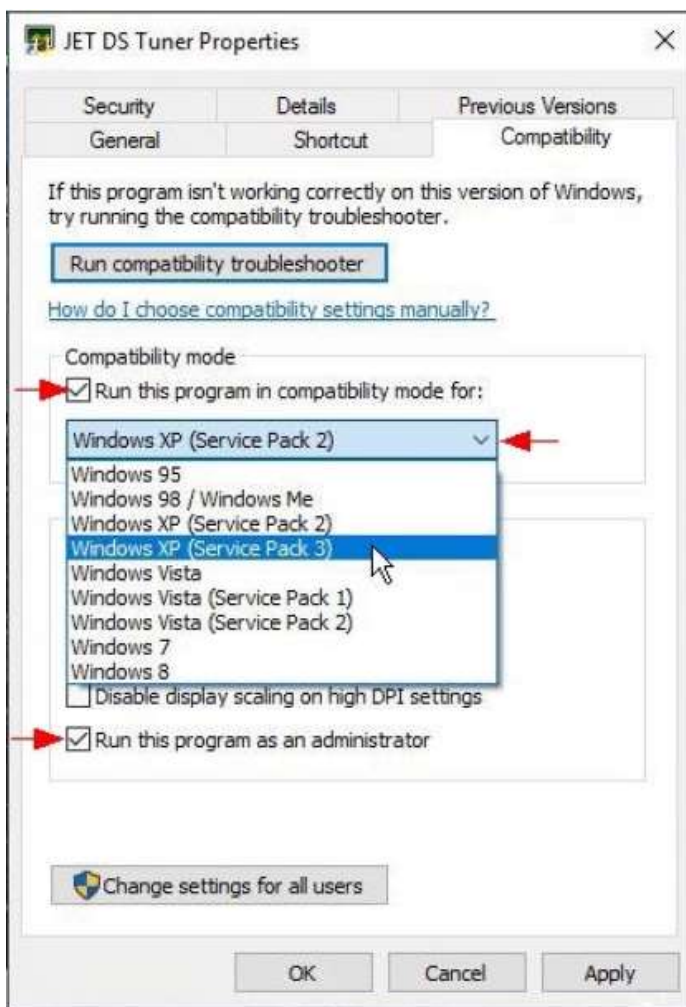
16. Once the setup program has completed the program installation you will need to set both the Dynamic Spectrum Tuner and the JET Flash program to run in compatibility mode and as an administrator.
17. To set the Dynamic Spectrum Tuner to run in compatibility mode and as an administrator right click on the Dynamic Spectrum Tuner icon on your Desktop and select Properties from the pop-up menu.



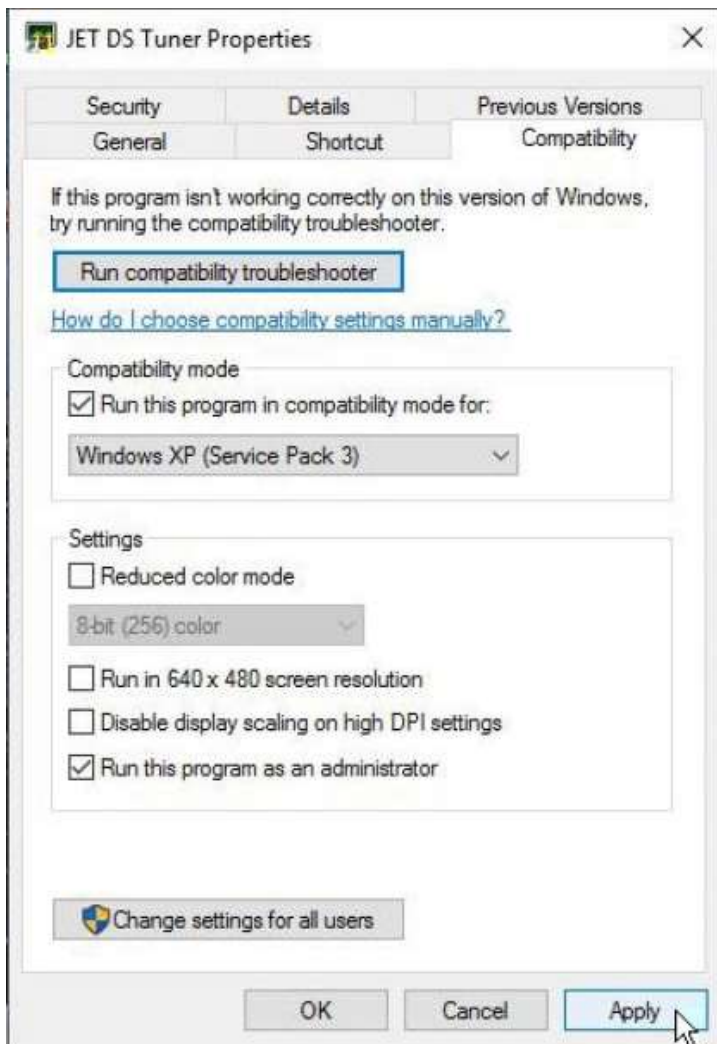
18. This will display the Properties screen for the Dynamic Spectrum Tuner program. On the Properties screen click on the Compatibility tab to display the Compatibility screen.



19. On the Compatibility screen check the 'Run this program in compatibility mode for:' check box. Click on the down arrow to the right of the compatibility mode box and select 'Windows XP (Service Pack 3)' from the list. Then check the 'Run this program as an administrator' check box.

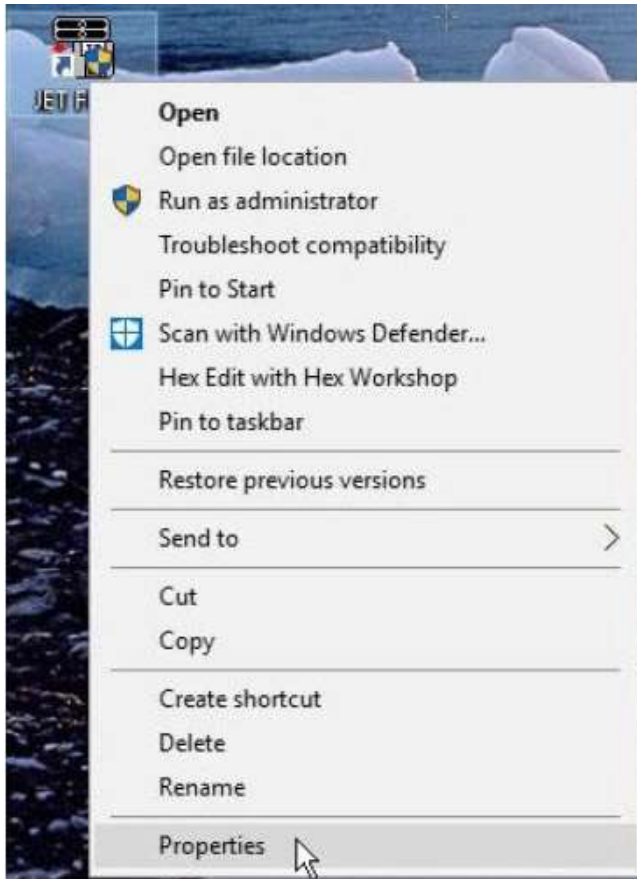


20. Click on the 'Apply' button and then on the 'OK' button to close the Properties screen.

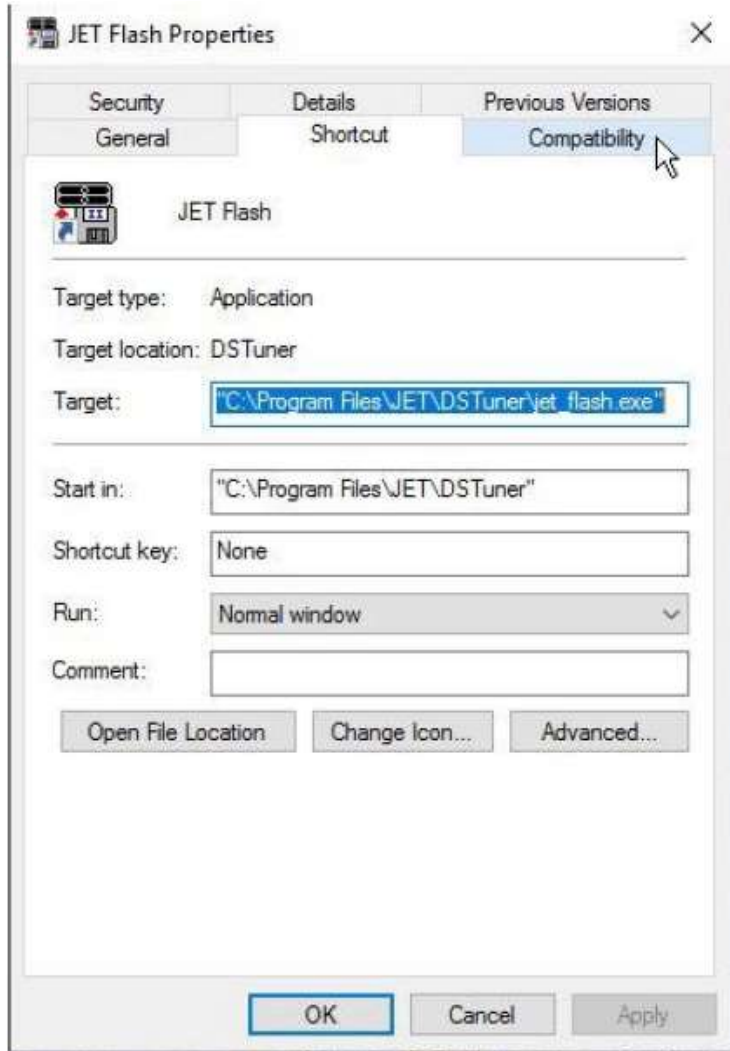




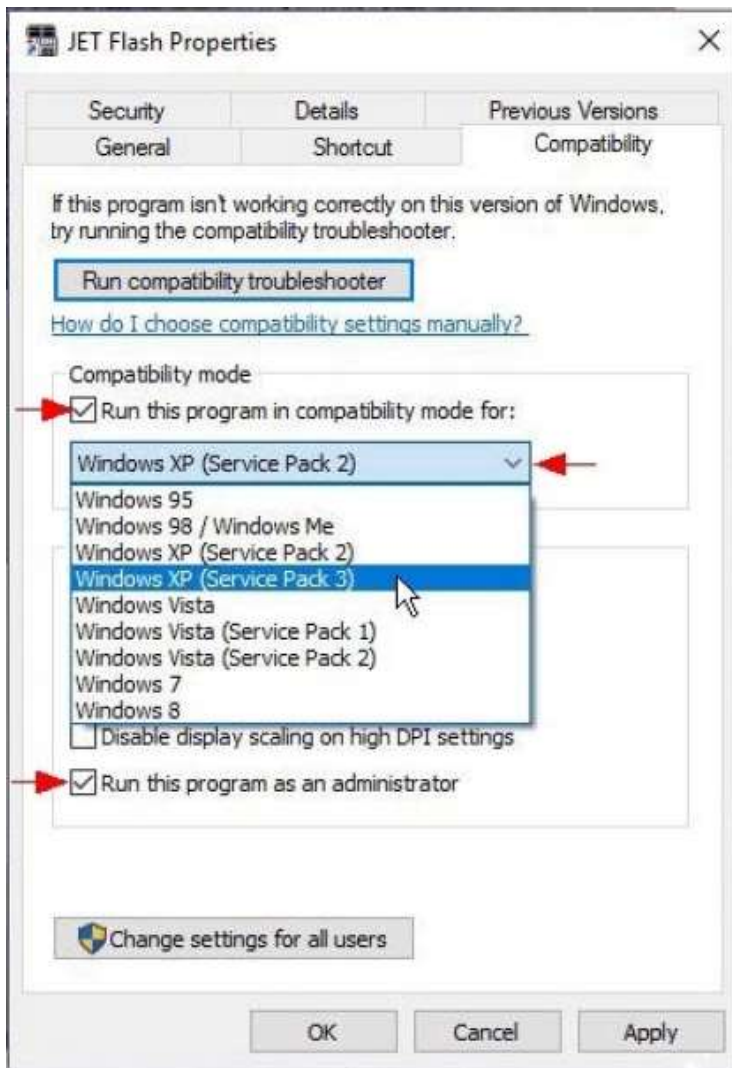
21. Next repeat this process for the JET Flash program. Right click on the JET Flash icon on your Desktop and select 'Properties' from the pop-up menu.



22. This will display the Properties screen for the JET Flash program. On the Properties screen click on the Compatibility tab to display the Compatibility screen.



23. On the Compatibility screen Check the 'Run this program in compatibility mode for:' check box. Click on the down arrow to the right of the compatibility mode box and select 'Windows XP (Service Pack 3)' from the list. Then check the 'Run this program as an administrator' check box.



24. Click on the 'Apply' button and then on the 'OK' button to close the Properties screen for the JET Flash program. Install the USB drivers for your Dynamic Spectrum Tuner interface cable as described in the Quick Start Guide on the Dynamic Spectrum Tuner thumb drive.

